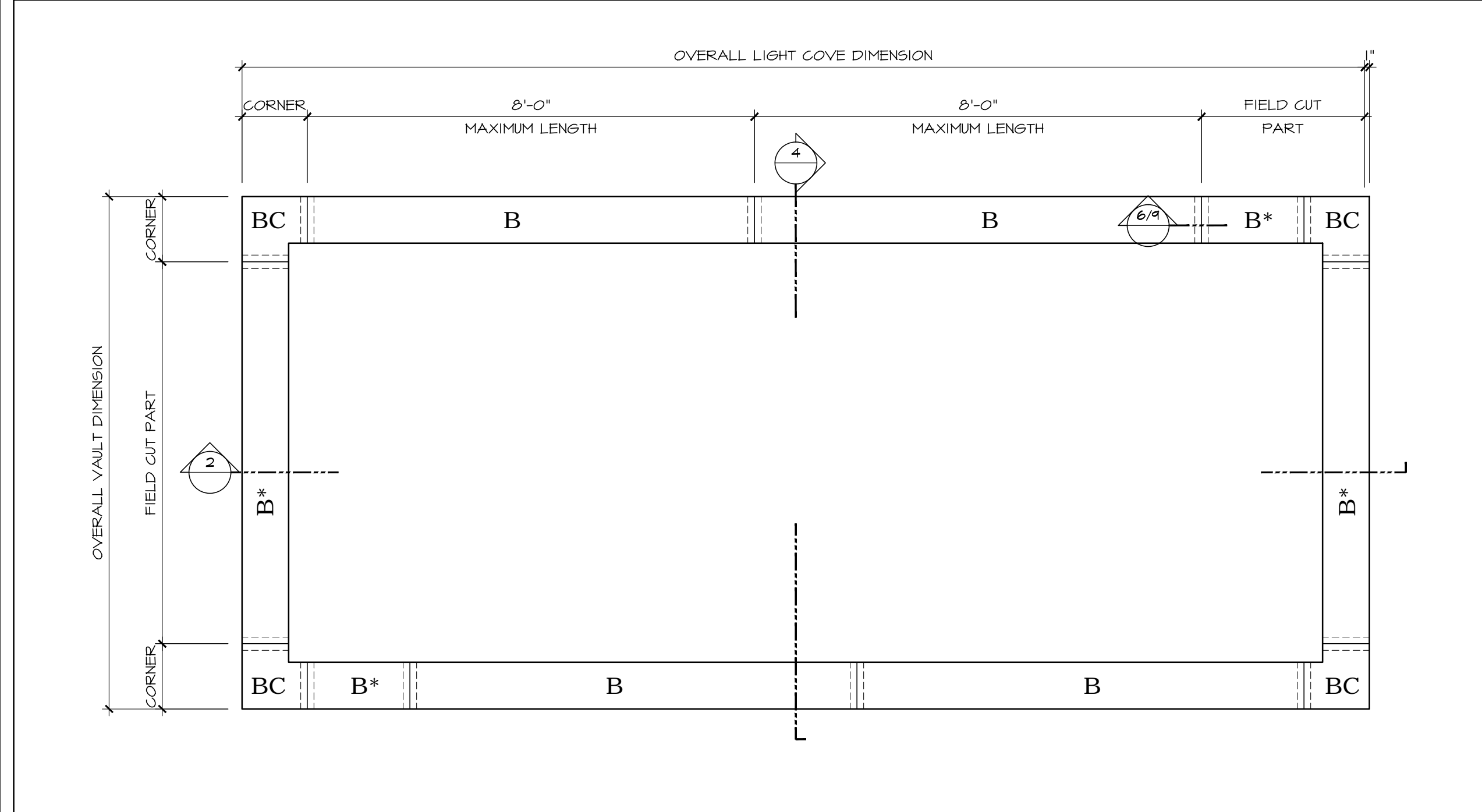
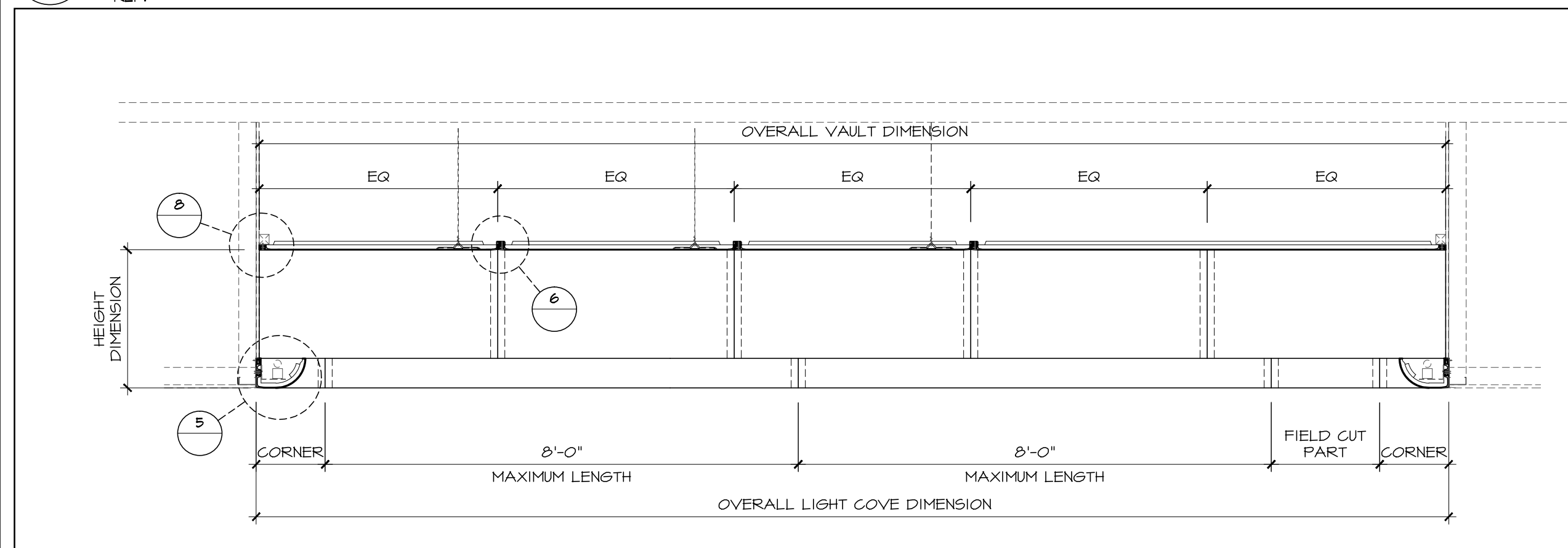


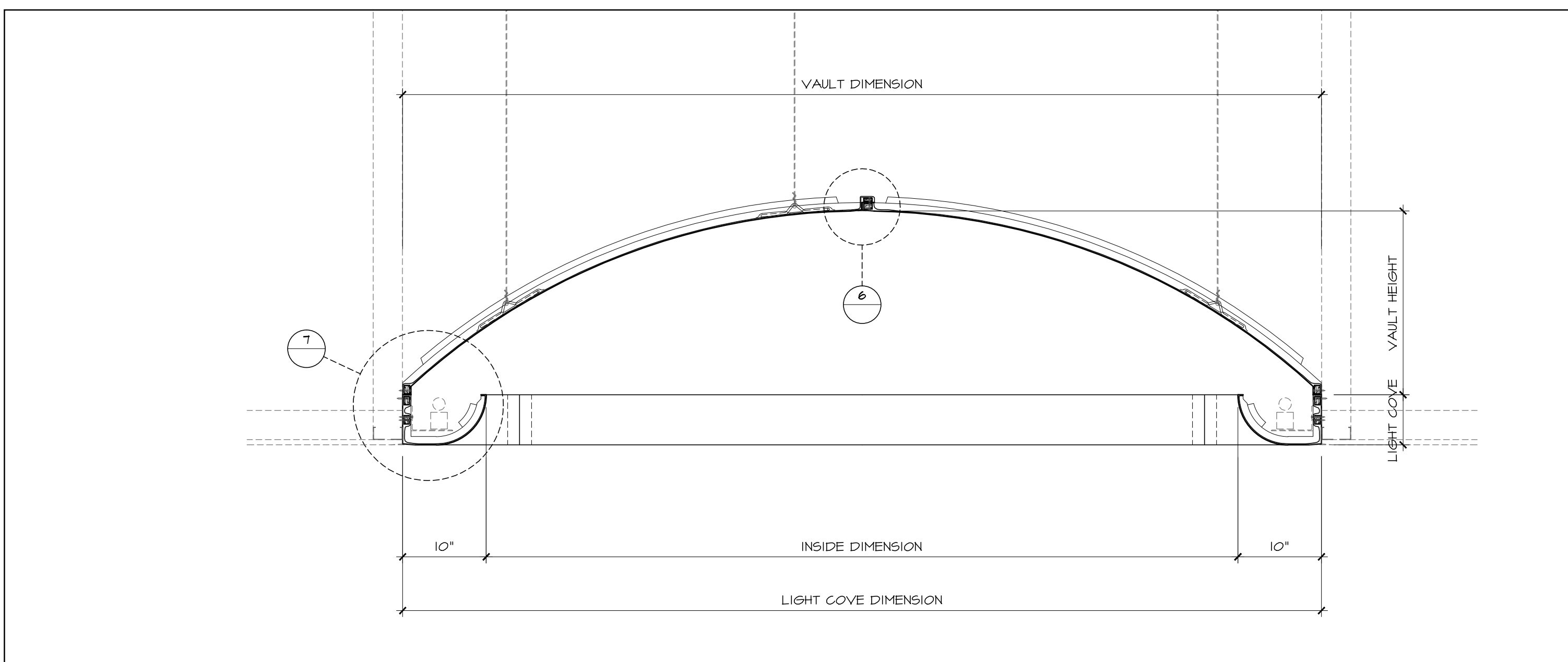
1 REFLECTED CEILING PLAN - GRG CEILING VAULT
SCALE: 1/2"=1'-0"
REF:



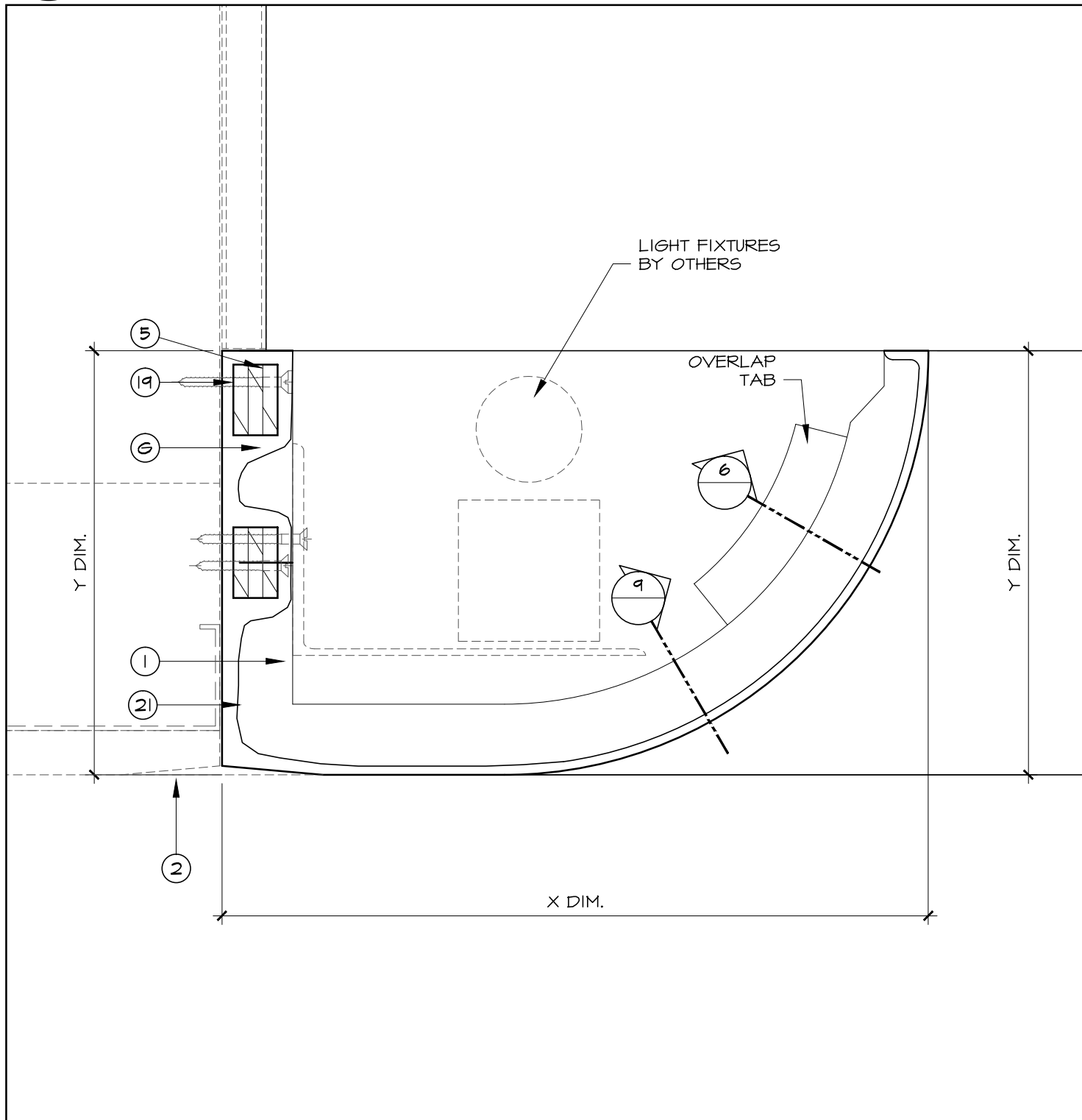
2 REFLECTED CEILING PLAN - GRG LIGHT COVE
SCALE: 1/2"=1'-0"
REF:



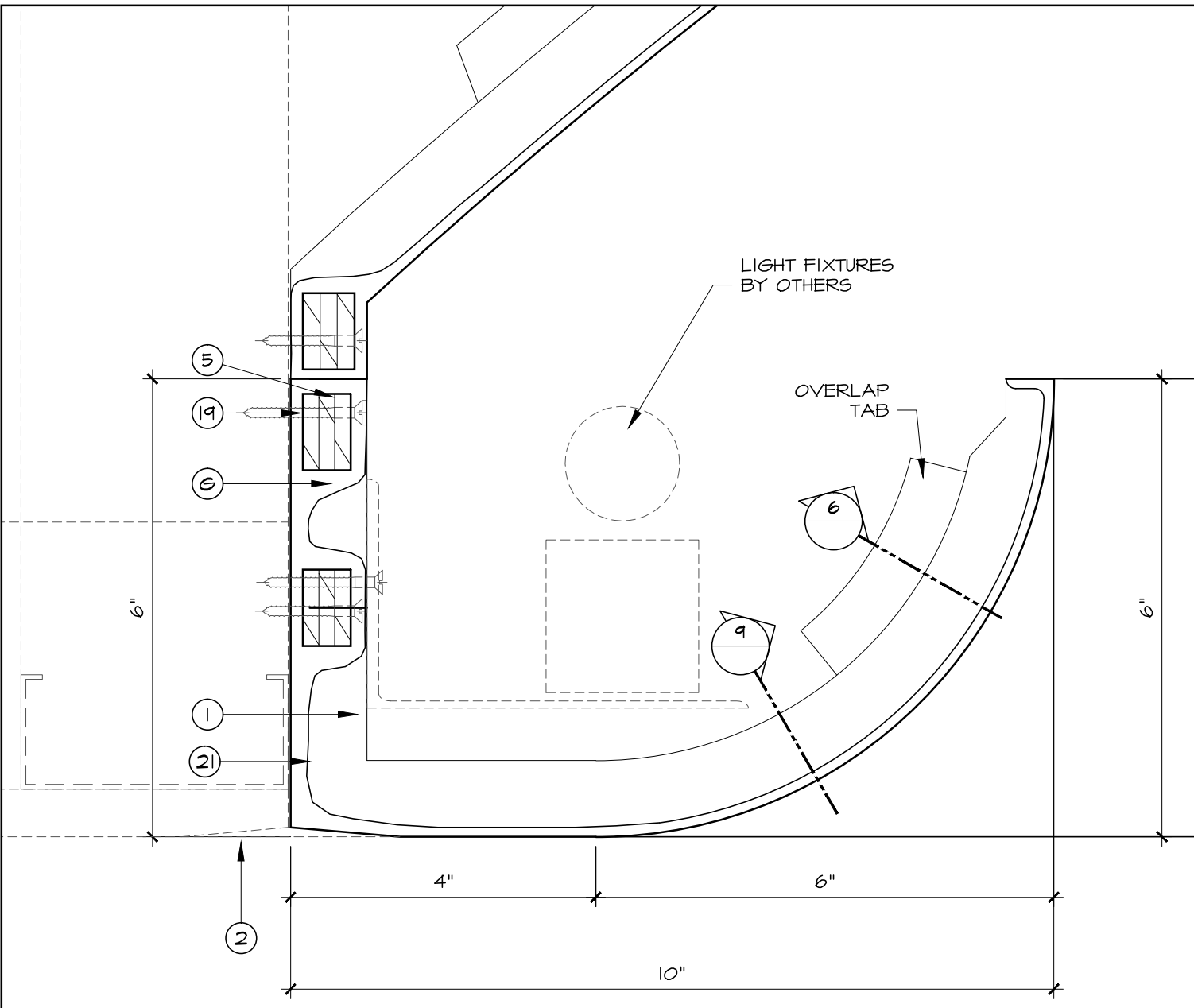
3 SECTION
SCALE: 1/2"=1'-0"
REF:



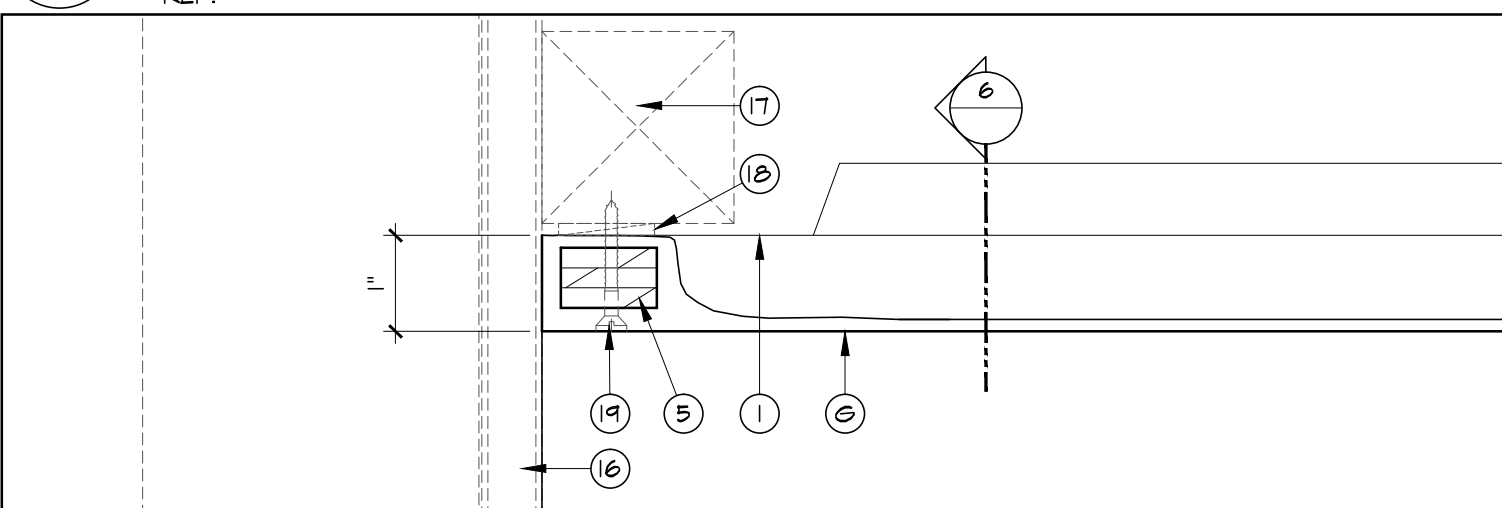
4 SECTION
SCALE: 1"=1'-0"
REF:



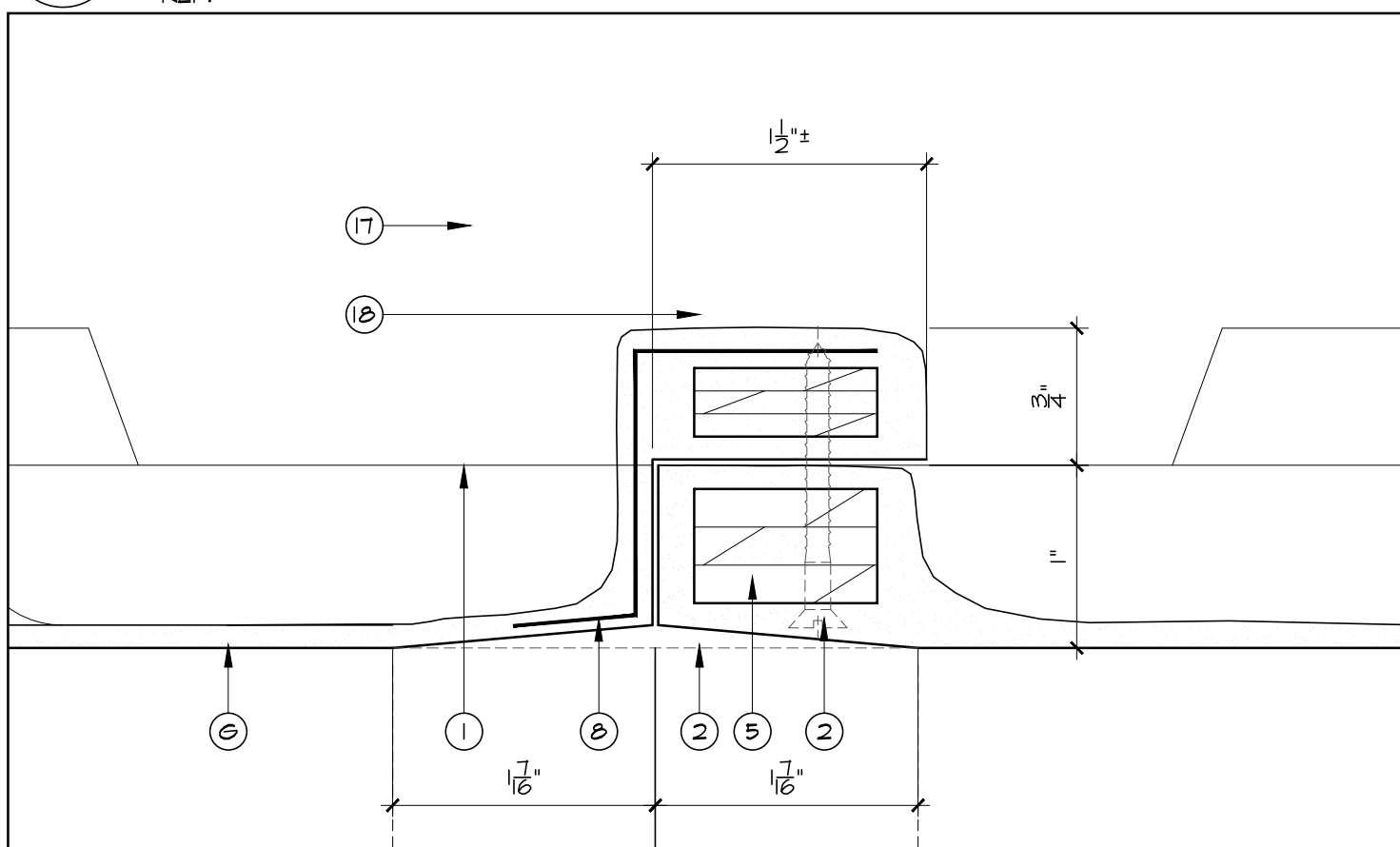
5 ENLARGE DETAIL
SCALE: HALF FULL
REF:



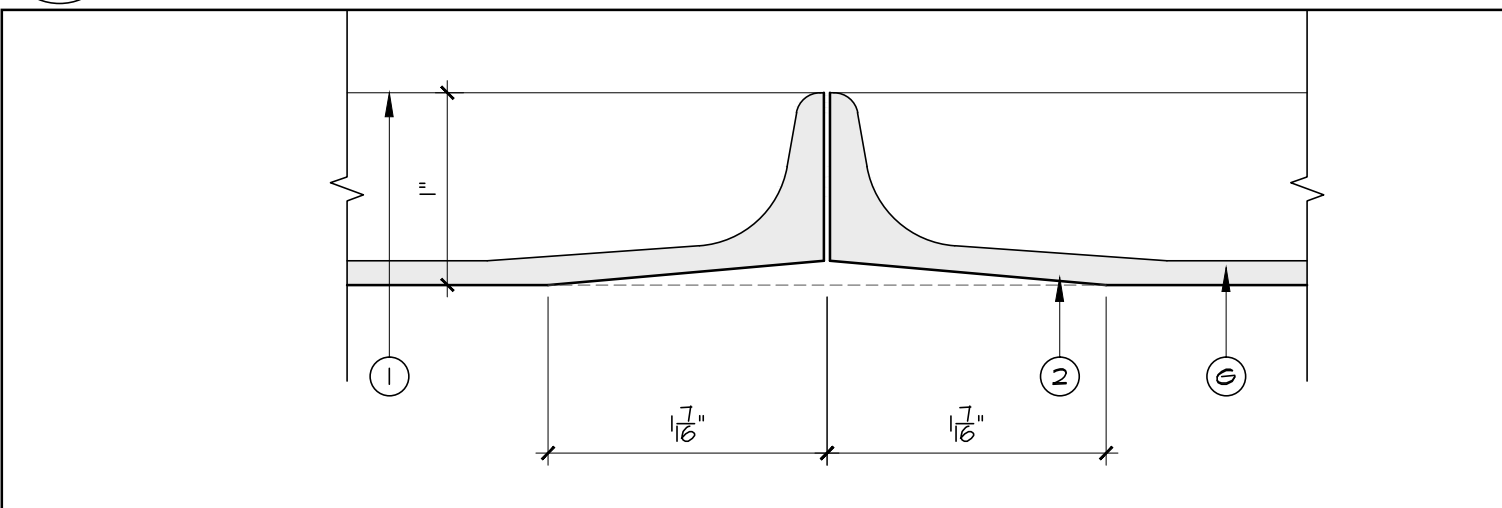
7 ENLARGE DETAIL
SCALE: HALF FULL
REF:



8 ENLARGE DETAIL @ END CONDITION
SCALE: HALF FULL
REF:



6 TYPICAL GRG TAPE JOINT DETAIL
SCALE: FULL
REF:



9 TYPICAL GRG TAPE JOINT DETAIL
SCALE: FULL
REF:

STANDARD LEGEND
G.R.G. (G/PG)

(G) G.R.G. [GLASS REINF. GYPSUM]	(S) WOOD FLANGES
(PG) G.R.G. [FACTORY FINISHED]	(S) STEEL FLANGES
(1) FLANGES	
(2) TAPE REVEAL [FIELD TAPED]	
(3) JOINT [V]	
(4) DRAFT	
(5) PLYWOOD REINF. [CONT.'S]	
(6) PLYWOOD BLOCK INSERT	
(7) N/A	
(8) STEEL "L" OR "Z" [NOT CONT.'S]	(16) DRYWALL OR PLYWOOD BACKING
(9) BUILT-IN "U" REINF. [CONT.'S]	(17) FRAMING, BLOCKING, ETC.
(10) BUILT-IN ROD REINF.	(18) SHIMS
(11) BUILT-IN LOOP [HANGER]	(19) SCREWS [FILLED AS REQ'D]
(12) BUILT-IN WOOD GUSSET	(20) CAULKED JOINT
(13) BEVEL EDGES / CORNERS	(21) ADHESIVE
(14) FALSE JOINT	(22)
(15) N/A	(23)
	(24)

MISCELLANEOUS

(XX) NUMBER DENOTES RECOMMENDED INSTALLATION SEQUENCE

* ASTERISK DENOTES SITE CUT PART

ALL BUILT-IN STEEL IS GALVANIZED

CERTIFICATION

FORMGLAS IS REGISTERED AS AN ISO 9001-2000 COMPANY

- G.R.G. NOTES**
ALWAYS FIELD FINISHED
- 1. INSTALLATION**
- FASTENING, SUSPENSION AND BRACING METHODS INDICATED ARE TO BE CONSIDERED A GUIDE ONLY. THE INSTALLATION CONTRACTOR SHALL ABIDE BY LOCAL CODES, VERIFY JOB CONDITIONS AND ADJUST INSTALLATION PROCEDURES ACCORDINGLY.
 - SOME SITE CUTTING AND/OR GRINDING OF PARTS MAY BE REQUIRED.
- 2. TAPING AND CONTROL JOINTS (WHERE APPLICABLE)**
- FOLLOW U.S.G. GYPSUM CONSTRUCTION HANDBOOK (LATEST EDITION) REGARDING TAPING METHODS AND CONTROL JOINTS.
- 3. PAINTING**
- SURFACE IMPERFECTIONS WILL OCCUR AT TIMES. SAND OR PATCH WITH SPACKLE / PAINT FILLER COMPOUNDS. FOLLOW A.S.T.M.C. 840 PAINT SPECIFICATIONS REGARDING SEALING AND FINISHING TO AVOID TAPE JOINT READ THROUGH.
 - GLOSS PAINT IS NOT RECOMMENDED.
- 4. DRAFT ANGLES AND RADI**
- DRAFT ANGLES ARE REQUIRED FOR MOLD RELEASE. UNLESS SPECIFICALLY NOTED, REVEALS, SETBACKS OR RETURNS WILL BE DRAFTED BETWEEN 5° AND 10°. ALL CORNERS WILL HAVE A SLIGHT RADIUS UNLESS SPECIFICALLY NOTED.
- 5. TOLERANCES**
- SHELL THICKNESS: $\pm \frac{1}{16}$ " (1.6MM)
 - DIMENSIONAL IN ALL DIRECTIONS: (MIN.) $\pm \frac{1}{16}$ " (3.2MM)
 - WARPAGE OR BOWING: $\pm \frac{1}{16}$ " PER FT (0.5MM PER CM)
 - FIELD SHIMMING MAY BE REQUIRED
- 6. ITEMS EXCLUDED**
- UNLESS SPECIFICALLY NOTED, HARDWARE, CLIPS, FASTENERS, ADHESIVE, CAULKING, TAPING MATERIALS, etc. ARE TO BE SUPPLIED BY OTHERS.
- 7. SEE FORMGLAS SPECIFICATIONS**
- FOR ADDITIONAL INFORMATION
- 8. NOTE**
- ALL "CUSTOM MOLDS" WILL BE DESTROYED ONE MONTH AFTER DELIVERY OF MATERIALS. CONTRACTOR/ OWNER MAY NEGOTIATE TO RETAIN MOLDS.
- 9. NOTE**
- DRAWING APPROVAL CONSTITUTES REVIEW OF CONTENT. STANDARD LEGEND, GENERAL NOTES, COLORS/FINISHES/PATTERN AND DIMENSIONAL VERIFICATION.
 - FORMGLAS PRODUCTS LTD. WILL PROCEED WITH MANUFACTURING UPON RECEIPT OF WRITTEN APPROVAL OF SHOP DRAWINGS.

REVISIONS _____ DATE _____

Formglas
Products Ltd.

2 CHAMPAGNE DRIVE, TORONTO, ONT. M3J-2C5 CANADA
TEL: (416) 635-8030 FAX: (416) 635-6588
338 FOURTEEN ST, SUITE 150 AMBRIDGE, PA 15003 USA
TEL: (724) 266-1220 FAX: (724) 266-7174
AVE. RUBILINA 88, PARQUE INDUSTRIAL PALACO, MEXICALI, B.C.
TEL: (686) 582-7609 FAX: (686) 582-7615
E-MAIL: ENG@FORMGLAS.COM

GRG CEILING VAULT
REFLECTED PLAN/SECTIONS/DETAILS

DATE: _____ SCALE: AS SHOWN
DRAWN: _____ CHECKED: _____
DRWG: _____

DATE: 03_OCT_2011 - 4:58PM
FILE NAME: C:\BRAIN\STANDARD DRAWINGS\GRG VAULT-DETAILS.DWG